

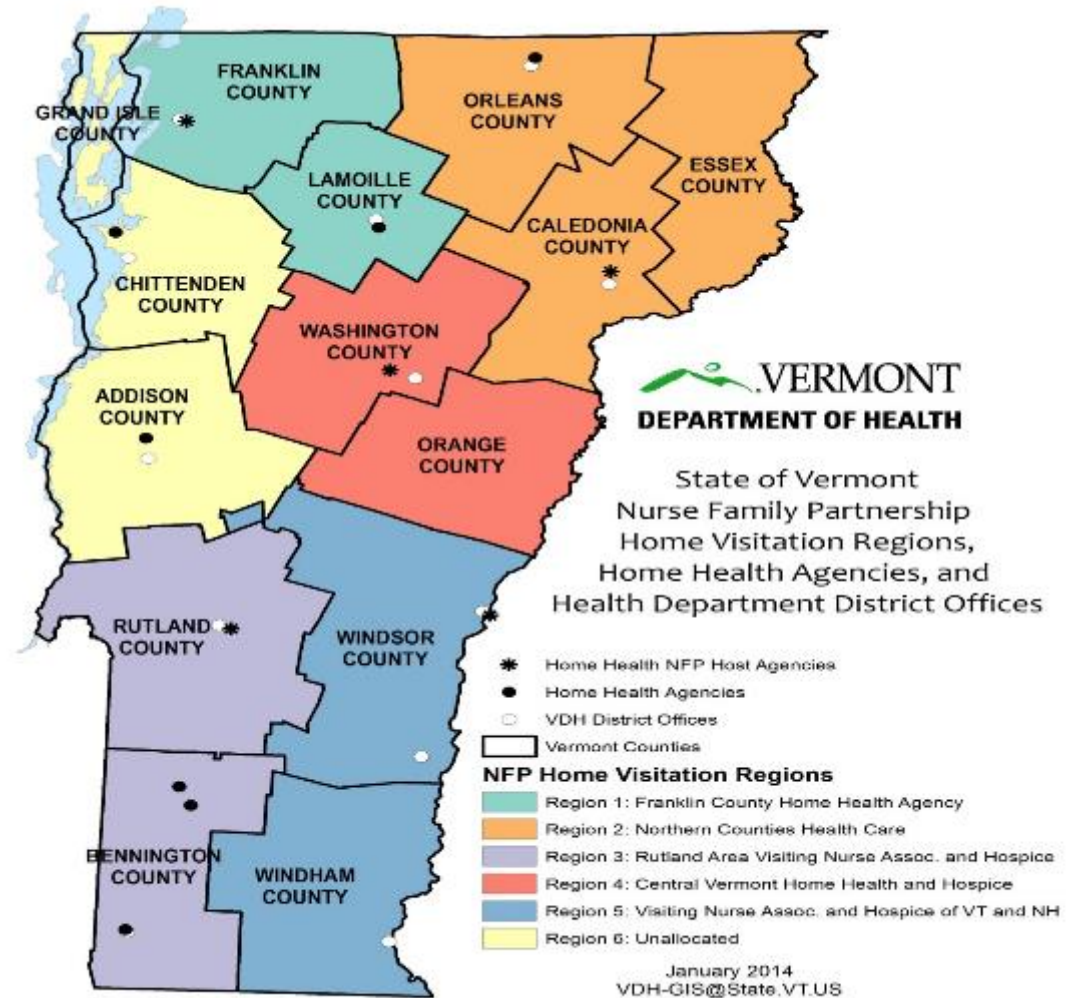
# Nurse Family Partnership in Vermont

- **Evidence-based, nurse led, home visiting** program for **low income 1<sup>st</sup> time pregnant moms** through the child's 2<sup>nd</sup> birthday
- Program goals are to improve: **pregnancy outcomes, child health and development, and economic self-sufficiency**
- Screening, referrals, and follow up for: **smoking, alcohol and drug use, intimate partner violence, maternal depression and childhood developmental delay**
- Positive screens for enrolled Vermont families:

Depression	56%
Intimate partner violence	35%
Tobacco use	46%

Drug use	8%
Alcohol use	3%
Developmental delay	11%

# Nurse Family Partnership in Vermont



# Nurse Family Partnership in Vermont

## Evidence of improved outcomes: Smoking cessation

- **100%** of NFP clients are screened for tobacco, alcohol and drug use
- **42%** reported smoking cigarettes at intake
- **100%** of clients who use tobacco are referred to 802Quits
- **41%** of NFP moms who smoked at intake quit during pregnancy
- **29%** still refrained from smoking at 12 months postpartum

By comparison: % of clients quit smoking during pregnancy

<b>30%</b>	<b>Nurse Family Partnership clients</b>
24%	All Vermont women
20%	Vermont women with births paid by Medicaid

# Help Me Grow Vermont

Statewide system for **improving access to existing resources and services** for **young children and their families**.

**Proactively addresses family's concerns** about their child's behavior and development by making connections to **existing community-based services** and **high quality parent education resources**.

**Facilitates collaboration between health professionals, early care and education professionals, human services providers, and families** in order to better identify and address of the needs of children in Vermont.

## Family & Community Outreach

to promote *Help Me Grow Vermont* and bolster healthy child development through families

## Child Health and Education Provider Outreach

to support developmental promotion, early detection, and intervention

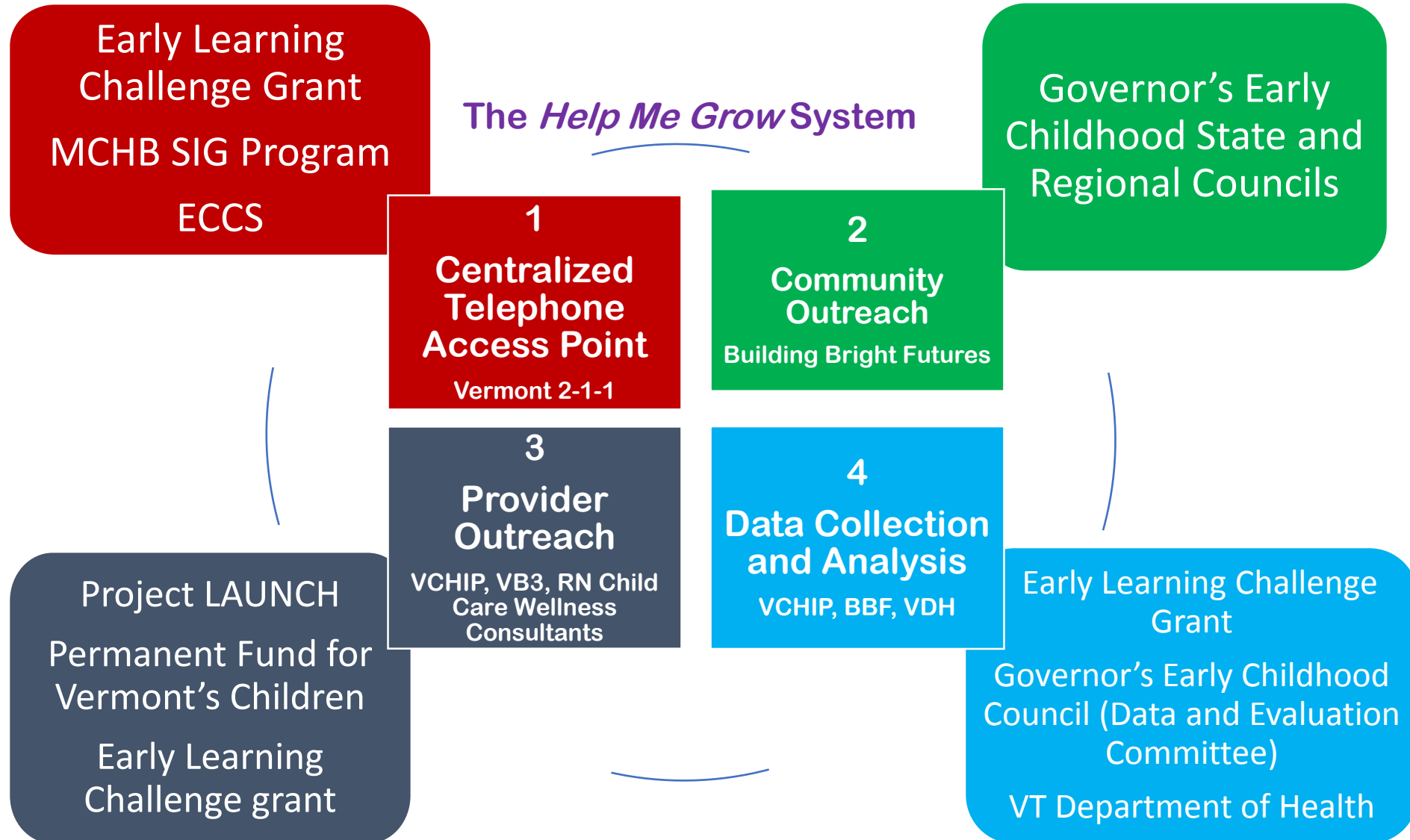
## Data Collection & Analysis

to understand all aspects of the *Help Me Grow Vermont* system, including gaps and barriers

## Centralized Phone Access Point

to connect children and their families to services and care coordination

# Leveraging funding for the “4 Core”



# Help Me Grow Vermont

Centralized Access Point at Vermont 2-1-1 launched in September 2015.

Since launching the call center has processed:	
Calls (incoming)	788
Calls (outgoing/follow ups)	570
Referrals	931
Total # of children (unduplicated count) served by <i>HMG</i> care coordination	271

Program  
Accountability

# Help Me Grow Vermont



## Provider Outreach

Training and coaching to child health providers and early educators on developmental monitoring, screening and linkage.

- 461 early care and education providers trained
- 49 primary care practices participated in quality improvement training
- Working with pediatricians at the University of Vermont Medical Center and Pediatric New American Clinic on mitigating the impact of toxic stress

## Community Outreach

Building Bright Futures Regional Coordinators play a crucial role in *HMG VT* Family and Community Outreach networking efforts

BBF also assists the centralized access point to create a living, real-time statewide resource directory

# Help Me Grow Vermont



**How much did we do?**

**How well did we do it?**

